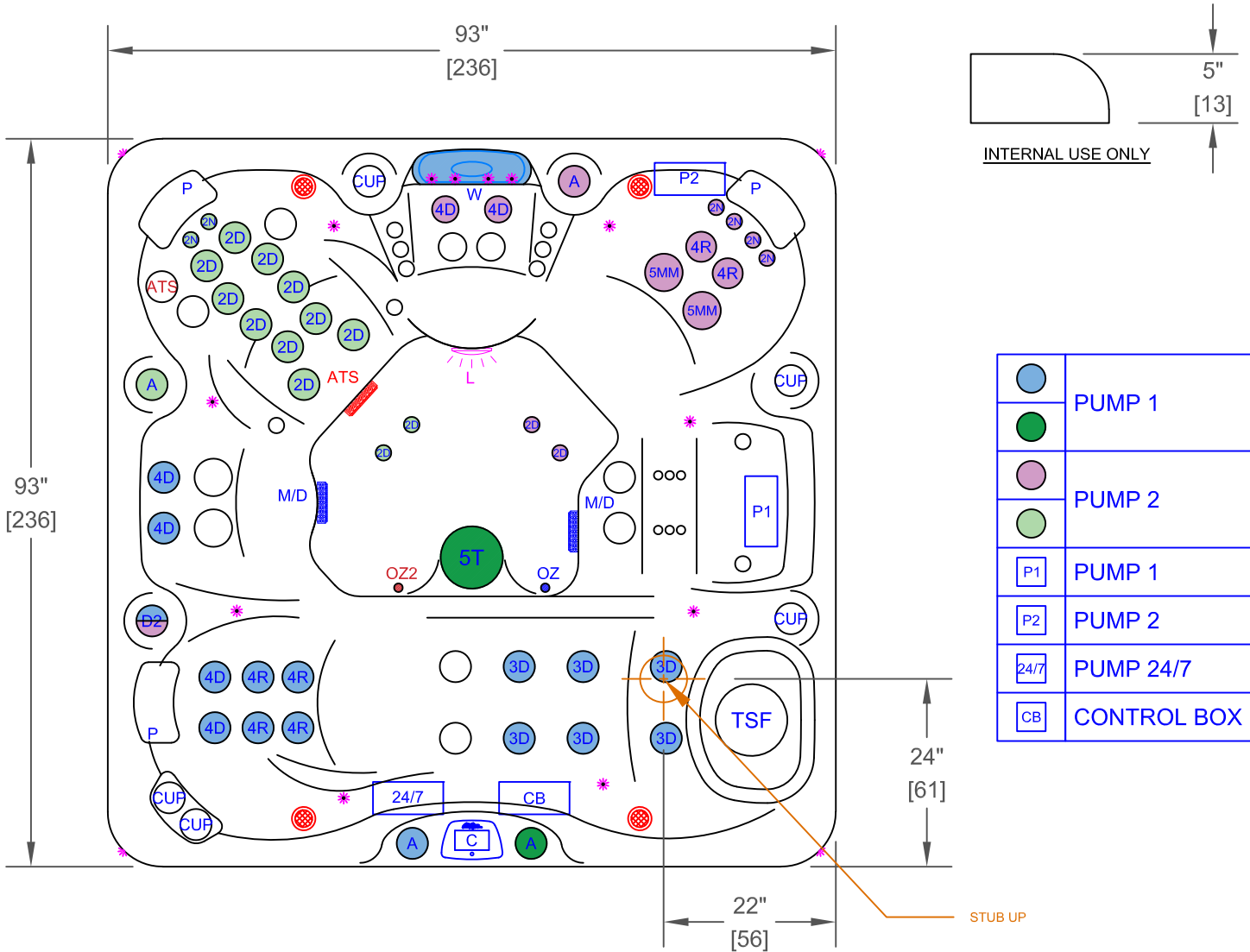


NOTES:

1. DUE TO OUR CONTINUOUS IMPROVEMENT PROGRAM, ALL MODELS AND SPECIFICATIONS ARE SUBJECT TO CHANGE WITHOUT NOTICE.



**EC-840LX - LEGEND**

SYMB.	DESCRIPTION	PART NUMBER	QTY.
2N	200 VELOCITY NECK 100%	PLU29920-612-400	6
2D	200 VELOCITY DIRECTIONAL	PLU29920-012-400	14
3D	300 VELOCITY DIRECTIONAL	PLU29930-112-400	6
4D	400 VELOCITY DIRECTIONAL	PLU29940-112-400	6
4R	400 VELOCITY ROTO	PLU29940-122-400	6
5MM	500 VELOCITY MESSAGE - 14	PLU29950-071-400	2
5T	500 VELOCITY MESSAGE - 14	PLU29950-501-400	1
D2	VELOCITY 2" WATER DIVERTER VALVE	PLU25058-202-800	1
A	VELOCITY AIR CONTROL VALVE	PLU25059-202-400	3
W	LED WATERFALL		1
TSF	50 SQ. FT. TELEWEIR FILTER		1
M/D	MAIN DRAIN		2
P	Y-PILLOWS		4
C	CAL SPAS TOUCH 2		1
OZ	PURE SILK OZONATOR WITH MAZZIE INJECTOR AND MIXING CHAMBER		1
24/7	24/7 FILTRATION SYSTEM		1
[Lighting Symbol]	BEAM-LITE 4X CABINET CORNER LED LIGHTING		1
[Lighting Symbol]	MULTI COLORED LED LIGHT		1
[Lighting Symbol]	PERIMETER LED LIGHTING		1

**OPTIONS**

SYMB.	DESCRIPTION	OPTION NUMBER
ATS	EXCLUSIVE ADJUSTABLE THERAPY SYSTEM PLUS (ATS PLUS)	OPT22-109
OZ2	TWIN PURE SILK SYSTEM DIAL OZONATORS WITH MAZZIE INJECTORS AND MIXING CHAMBERS	OPT22-102DX-1
[Speaker Symbol]	FREEDOM SOUND SYSTEM BLUETOOTH, POWERED SUBWOOFER AND 4X SPEAKERS	OPT22-FS43
-	THERMO-GUARD FULL FOAM	OPT22-900
[Salt System Symbol]	CAL SPAS SALT SYSTEM	OPT22-113S

PROPRIETARY AND CONFIDENTIAL THE INFORMATION CONTAINED IN THIS DRAWING IS THE SOLE PROPERTY OF CAL SPAS. ANY REPRODUCTION IN PART OR AS A WHOLE WITHOUT THE WRITTEN PERMISSION OF CAL SPAS IS PROHIBITED.		 CAL SPAS INC. 1462 EAST NINTH STREET, POIMONA, CA 91766	
SPECIFICATIONS		TITLE	JET LAYOUT - STD
DIMENSION (in)	84"x84"x40-1/2"	LINE	ESCAPE X-SERIES
DIMENSION (cm)	213x213x100	MODEL	2022 SPA LINE AVALON
DRY WEIGHT	800 LBS [363 Kg]	NUM	EC-840LX
FILLED WEIGHT	4340 LBS [1969 Kg]	DWG NO.	CS000521
		REV	A
WATER CAP.	425 GAL [1609 L]	SCALE	NTS
			SHEET 1 OF 1